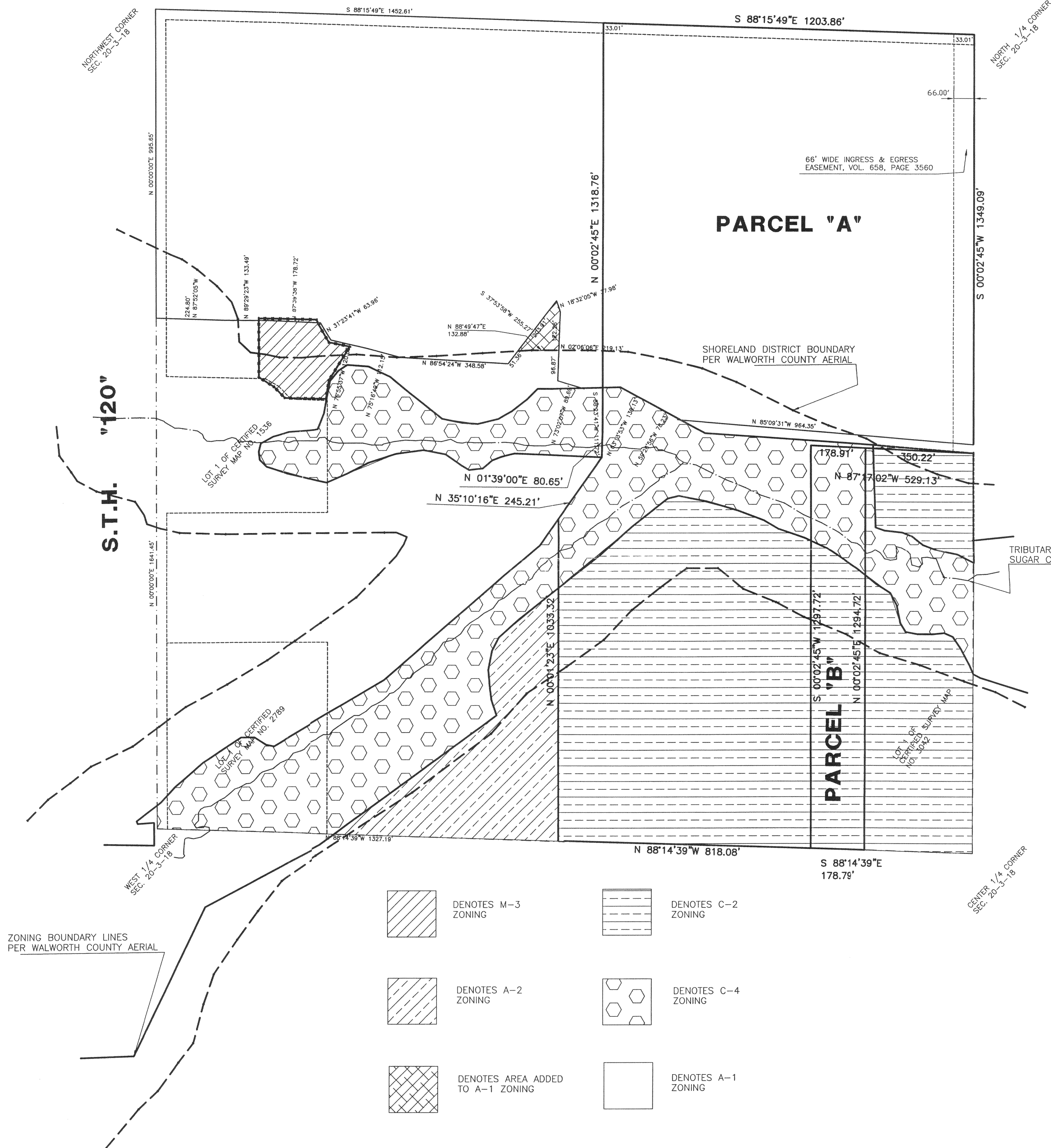


POTTER ROAD



LEGAL DESCRIPTION

[WESTERLY A-1 PARCEL] A TRACT OF LAND IN THE NORTHEAST 1/4 AND THE NORTHWEST 1/4 OF THE NORTHWEST 1/4 OF SECTION 20, TOWN 3 NORTH, RANGE 18 EAST, IN THE TOWN OF SPRING PRAIRIE, COUNTY OF WALWORTH, STATE OF WISCONSIN, BOUNDED AND DESCRIBED AS FOLLOWS:

COMMENCE AT THE NORTHEAST CORNER OF SAID SECTION;

THENCE South 88 degrees 15 minutes 49 seconds East for a distance of 1452.61 feet, ALONG THE NORTH LINE OF SAID 1/4 SECTION, TO A POINT;

THENCE South 00 degrees 02 minutes 45 seconds West for a distance of 1175.78 feet, TO A POINT;

THENCE South 88 degrees 23 minutes 41 seconds West for a distance of 60.11 feet, TO A POINT;

THENCE North 73 degrees 02 minutes 07 seconds West for a distance of 89.69 feet, TO A POINT;

THENCE North 02 degrees 06 minutes 06 seconds East for a distance of 96.87 feet, TO A POINT;

THENCE South 88 degrees 49 minutes 47 seconds West for a distance of 132.88 feet, TO A POINT;

THENCE South 37 degrees 53 minutes 58 seconds West for a distance of 51.36 feet, TO A POINT;

THENCE North 86 degrees 54 minutes 24 seconds West for a distance of 348.58 feet, TO A POINT;

THENCE North 75 degrees 16 minutes 49 seconds West for a distance of 112.15 feet, TO A POINT;

THENCE North 76 degrees 55 minutes 37 seconds West for a distance of 120.85 feet, TO A POINT;

THENCE North 31 degrees 23 minutes 41 seconds West for a distance of 63.96 feet, TO A POINT;

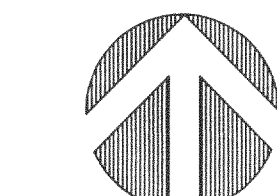
THENCE North 87 degrees 39 minutes 38 seconds West for a distance of 178.72 feet, TO A POINT;

THENCE North 89 degrees 29 minutes 23 seconds West for a distance of 133.49 feet, TO A POINT;

THENCE North 87 degrees 52 minutes 05 seconds West for a distance of 224.80 feet, TO A POINT ON THE WEST LINE OF SAID 1/4 SECTION;

THENCE North 00 degrees 00 minutes 00 seconds East for a distance of 995.65 feet, ALONG THE SAID WEST LINE, TO THE POINT OF COMMENCEMENT.

Together with and subject to covenants, easements, and restrictions of record.



NORTH

SCALE

0 200 400

FEET

LEGAL DESCRIPTION

[PARCEL A] A TRACT OF LAND IN THE NORTHEAST 1/4 AND THE SOUTHEAST 1/4 OF THE NORTHWEST 1/4 OF SECTION 20, TOWN 3 NORTH, RANGE 18 EAST, IN THE TOWN OF SPRING PRAIRIE, COUNTY OF WALWORTH, STATE OF WISCONSIN, BOUNDED AND DESCRIBED AS FOLLOWS:

COMMENCE AT THE NORTH 1/4 CORNER OF SAID SECTION;

THENCE South 00 degrees 02 minutes 45 seconds West for a distance of 1349.09 feet, ALONG THE EAST LINE OF SAID 1/4 SECTION, TO A POINT;

THENCE North 87 degrees 17 minutes 02 seconds West for a distance of 529.13 feet, ALONG THE NORTH LINE AND SAID NORTH LINE EXTENDED OF CSM NO. 3042, TO A POINT;

THENCE South 00 degrees 02 minutes 45 seconds West for a distance of 1297.72 feet, TO A POINT;

THENCE North 88 degrees 14 minutes 39 seconds East for a distance of 808.08 feet, ALONG THE SOUTH LINE OF SAID 1/4 SECTION, TO A POINT;

THENCE North 00 degrees 01 minutes 23 seconds East for a distance of 1033.32 feet, ALONG THE WEST LINE OF THE EAST 1/2 OF SAID 1/4 SECTION, TO A POINT;

THENCE North 35 degrees 10 minutes 16 seconds East for a distance of 245.21 feet, TO A POINT;

THENCE North 01 degrees 39 minutes 00 seconds East for a distance of 80.65 feet, TO A POINT;

THENCE North 00 degrees 02 minutes 45 seconds East for a distance of 1318.76 feet, TO A POINT;

THENCE South 88 degrees 15 minutes 49 seconds East for a distance of 1203.86 feet, ALONG THE NORTH LINE OF SAID 1/4 SECTION, TO THE POINT OF COMMENCEMENT. RESERVING THE NORTHERLY 33.00 FEET FOR PUBLIC ROAD PURPOSES. SAID TRACT CONTAINS 60.00 ACRES OF LAND EXCLUDING SAID RIGHT OF WAY.

Together with and subject to covenants, easements, and restrictions of record.

Said property contains 60.914 acres more or less.

STATE OF WISCONSIN
COUNTY OF RACINE

The above-described property has been surveyed under my direction and the above map is a correct representation thereof.

DATED AT: NORTH CAPE, THIS 22ND DAY OF FEBRUARY, 2000.

Pete L. Bailey
AMERICAN SURVEYING COMPANY, INC.
PETE L. BAILEY, RLS NO. 1398
RECERTIFIED this _____ day of _____, 2000.

LEGAL DESCRIPTION

[EASTERLY A-1 ZONING PARCEL] A TRACT OF LAND IN THE NORTHEAST 1/4 AND THE SOUTHEAST 1/4 OF THE NORTHWEST 1/4 OF SECTION 20, TOWN 3 NORTH, RANGE 18 EAST, IN THE TOWN OF SPRING PRAIRIE, COUNTY OF WALWORTH, STATE OF WISCONSIN, BOUNDED AND DESCRIBED AS FOLLOWS:

COMMENCE AT THE NORTH 1/4 CORNER OF SAID SECTION;

THENCE South 00 degrees 02 minutes 45 seconds West for a distance of 1321.21 feet, ALONG THE EAST LINE OF SAID 1/4 SECTION, TO A POINT;

THENCE North 85 degrees 09 minutes 31 seconds East for a distance of 964.35 feet, TO A POINT;

THENCE North 59 degrees 26 minutes 56 seconds West for a distance of 78.23 feet, TO A POINT;

THENCE North 63 degrees 13 minutes 53 seconds West for a distance of 138.13 feet, TO A POINT;

THENCE South 88 degrees 23 minutes 41 seconds West for a distance of 51.61 feet, TO A POINT;

THENCE North 00 degrees 02 minutes 45 seconds East for a distance of 1175.76 feet, TO A POINT;

THENCE South 88 degrees 15 minutes 49 seconds East for a distance of 1203.86 feet, ALONG THE NORTH LINE OF SAID 1/4 SECTION, TO THE POINT OF BEGINNING.

Together with and subject to covenants, easements, and restrictions of record.

Said property contains 35.300 acres more or less.

LEGAL DESCRIPTION

[AREA ADDED TO A-1 ZONING PARCEL] A TRACT OF LAND IN THE NORTHWEST 1/4 OF THE NORTHWEST 1/4 OF SECTION 20, TOWN 3 NORTH, RANGE 18 EAST, IN THE TOWN OF SPRING PRAIRIE, COUNTY OF WALWORTH, STATE OF WISCONSIN, BOUNDED AND DESCRIBED AS FOLLOWS:

COMMENCE AT THE NORTHWEST CORNER OF SAID SECTION;

THENCE South 00 degrees 00 minutes 00 seconds East for a distance of 995.65 feet, ALONG THE WEST LINE OF SAID 1/4 SECTION, TO A POINT;

THENCE South 87 degrees 52 minutes 05 seconds East for a distance of 224.80 feet, TO A POINT;

THENCE South 89 degrees 29 minutes 23 seconds East for a distance of 133.49 feet, TO A POINT;

THENCE South 87 degrees 39 minutes 38 seconds East for a distance of 178.72 feet, TO A POINT;

THENCE South 31 degrees 23 minutes 41 seconds East for a distance of 63.96 feet, TO A POINT;

THENCE South 76 degrees 55 minutes 37 seconds East for a distance of 120.85 feet, TO A POINT;

THENCE South 75 degrees 16 minutes 49 seconds East for a distance of 112.15 feet, TO A POINT;

THENCE South 86 degrees 54 minutes 24 seconds East for a distance of 348.58 feet, TO A POINT;

THENCE North 37 degrees 53 minutes 58 seconds East for a distance of 51.36 feet, TO THE POINT OF BEGINNING;

THENCE North 37 degrees 53 minutes 58 seconds East for a distance of 203.91 feet, TO A POINT;

THENCE South 18 degrees 32 minutes 05 seconds East for a distance of 37.98 feet, TO A POINT;

THENCE South 02 degrees 06 minutes 06 seconds West for a distance of 122.26 feet, TO A POINT;

THENCE South 88 degrees 49 minutes 47 seconds West for a distance of 132.88 feet, TO THE POINT OF BEGINNING.

Together with and subject to covenants, easements, and restrictions of record.

Said property contains 0.260 acres more or less.

LEGAL DESCRIPTION

[PARCEL B] A TRACT OF LAND IN THE SOUTHEAST 1/4 OF THE NORTHWEST 1/4 OF SECTION 20, TOWN 3 NORTH, RANGE 18 EAST, IN THE TOWN OF SPRING PRAIRIE, COUNTY OF WALWORTH, STATE OF WISCONSIN, BOUNDED AND DESCRIBED AS FOLLOWS:

COMMENCE AT THE NORTH 1/4 CORNER OF SAID SECTION;

THENCE South 00 degrees 02 minutes 45 seconds West for a distance of 1349.09 feet, ALONG THE EAST LINE OF SAID 1/4 SECTION, TO A POINT;

THENCE North 87 degrees 17 minutes 02 seconds West for a distance of 529.13 feet, ALONG THE NORTH LINE OF CERTIFIED SURVEY MAP NO. 3042, TO THE POINT OF BEGINNING;

THENCE South 00 degrees 02 minutes 45 seconds West for a distance of 1294.72 feet, ALONG THE WEST LINE OF SAID CERTIFIED SURVEY MAP, TO A POINT;

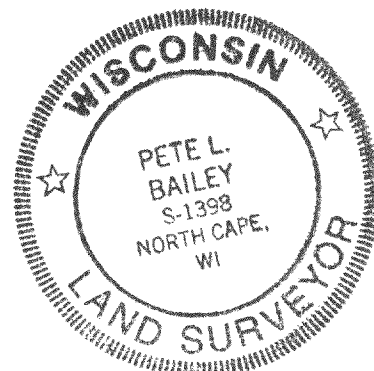
THENCE North 88 degrees 14 minutes 39 seconds East for a distance of 178.79 feet, ALONG THE SOUTH LINE OF SAID 1/4 SECTION, TO A POINT;

THENCE North 00 degrees 02 minutes 45 seconds East for a distance of 1297.72 feet, TO A POINT;

THENCE South 87 degrees 17 minutes 02 seconds East for a distance of 178.91 feet, TO THE POINT OF BEGINNING. SAID PARCEL TO BE COMBINED WITH LOT 1 OF CERTIFIED SURVEY MAP NO. 3042

Together with and subject to covenants, easements, and restrictions of record.

Said property contains 5.318 acres more or less.



TOWN OF SPRING PRAIRIE

PROJECT:
PLAT OF SURVEY/BOUNDARY SURVEY

PREPARED FOR: BUDDY R. SHORT

DRAWN BY: PLB

CHECKED BY: PLB

PLOT SCALE: 1" = 200'

DATE: 02/22/2000

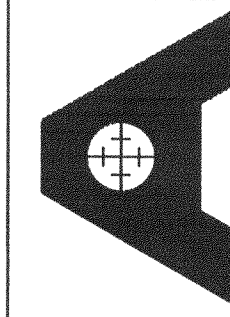
JOB NO.: 200014

DWG. FILE: JN200040

REVISIONS: DATE

03/21/2000 REVISED LEGAL

AMERICAN
SURVEYING
COMPANY, INC.



12207 C.T.H. "K" FRANKSVILLE, WISCONSIN 53126
TEL: (414) 835-4774 FAX: (414) 835-2379

Sheet
1
of
1